

TIP: If you get stuck, there's a handy installation video you can watch at: www.illumskylights.com.au

KIT CONTENTS:

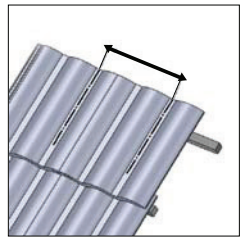
1x CABLE	4x WASHERS
1x SOLAR COLLECTOR	4x 6mm NUT
1x ILLUME LIGHT PANEL	4x 6mm BOLT
1x CONTROL MODULE	2x COACH SCREWS
2x (A) BRACKET	
2x (B) BRACKET	

REQUIRED TOOLS

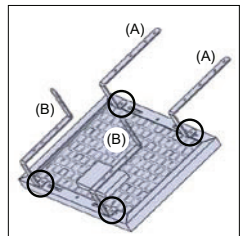
- 10mm SPANNER
- ADJUSTABLE SPANNER
- 2.2mm DRILL BIT
- DRILL
- PHILIPS-HEAD SCREWDRIVER
- SILICONE SEALANT
- PLASTER SAW

BEFORE YOU START - LOCATION ADVICE:
THIS SYSTEM IS DESIGNED TO OPERATE WITH THE SOLAR COLLECTOR INSTALLED IN A NORTH-FACING POSITION, WITHOUT POTENTIAL SHADE COVERAGE DURING DAYLIGHT HOURS. INCORRECT POSITIONING AND CAST SHADOWS FROM TREES OR STRUCTURES WILL IMPACT THE LIGHT OUTPUT OF THE ILLUME PANEL. FOR BEST RESULTS ENSURE YOU CHOOSE A NORTH-FACING AND OPEN POSITION TO INSTALL THE SOLAR COLLECTOR.

INSTALLATION TO A TILED ROOF

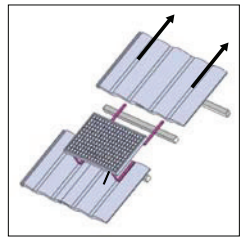


1 Measure tile pitch before attaching brackets to the solar collector.

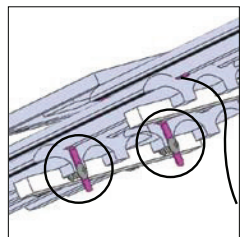


2 Align brackets to unit with roof pitch and use (6mm) Nuts and Bolts with 4x washers to secure (A) & (B) Brackets in position as per the diagram.

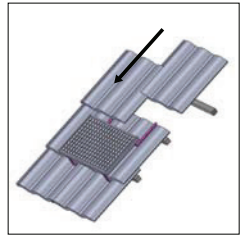
Note: Large models may have additional brackets included. Please refer to any additional literature included with the unit and use all supplied brackets within the kit.



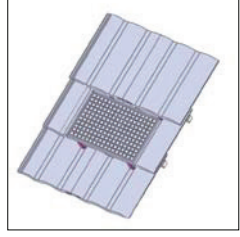
3 Slide roof tiles up (remove if necessary) to install panel. Place panel in position.



4 Use 2x coach screws to secure bracket panel in place. (Do not use screws as a clamp)



5 Slide tiles back in place and re-attach (if necessary).

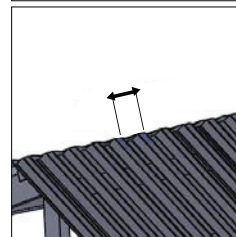
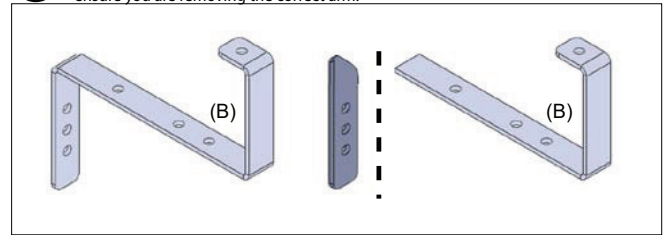


6 Finished installation should look as per diagram.

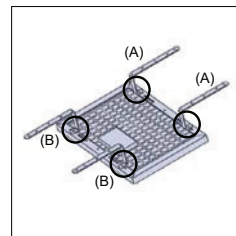
INSTALLATION TO A METAL DECK ROOF

Please Note: Additional roofing fasteners are required (not included) when installing onto a metal roof.

1 Cut arms from both (B) brackets as shown in diagram. Be careful to ensure you are removing the correct arm.

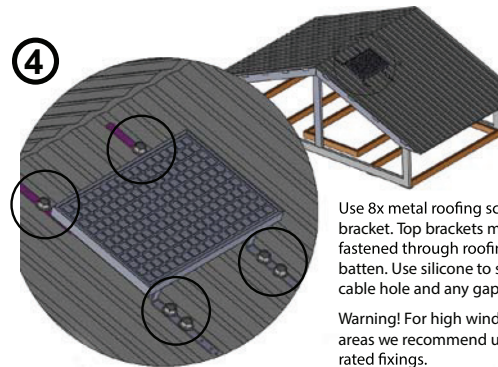


2 Measure roof corrugations before attaching brackets to the solar collector. Brackets should be attached to the top part of roof corrugation, not in the valley.



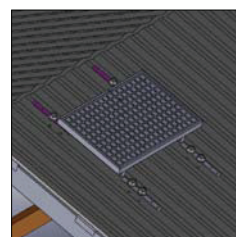
3 Align brackets to unit with roof pitch and use (6mm) Nuts and Bolts with 4x washers to secure (A) & (B) Brackets in position as per the diagram

Note: Large models may have additional brackets included. Please refer to any additional literature included with the unit and use all supplied brackets within the kit.



Use 8x metal roofing screws to secure bracket. Top brackets must be fastened through roofing into roof batten. Use silicone to seal screws, cable hole and any gaps.

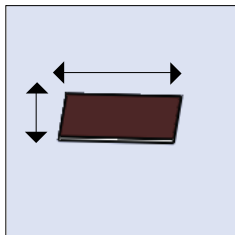
Warning! For high wind and cyclonic areas we recommend using cyclone rated fixings.



5 Fix solar panel to top of roof, with cable fitted underneath ridge cap. This eliminates the need to drill a clearance hole in roof for cable to be passed through.

6 Finished installation should look as per diagram

INSTALLATION OF ILLUME LIGHT PANEL

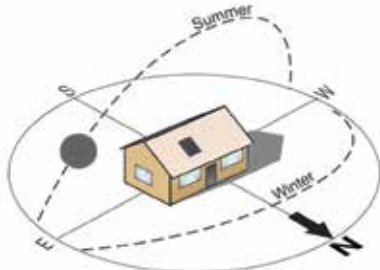


7 Measure and cut hole in plaster to recommended cut-out size (See table below).

Panel Size	Cut-out Size	Form Factor	Panel Size	Cut-out Size	Form Factor
500 x 500mm	490 x 490mm	Square	600 x 900mm	590 x 890 mm	Rectangular
600 x 600mm	590 x 590mm	Square	300 x 1200mm	290 x 1190 mm	Rectangular
300 x 600mm	288 x 588mm	Rectangular	400 x 1200mm	390 x 1190mm	Rectangular
700 x 700mm	675 x 675mm	Square	600 x 1200mm	590 x 1190mm	Rectangular

FOR 300 and 400 SQUARE UNITS AND 180, 270, 280 AND 350 ROUND UNITS PLEASE USE TEMPLATES PROVIDED

BEFORE YOU START - LOCATION ADVICE:



This illume system is designed to operate with the solar collector installed in a north-facing position, without potential shade coverage during daylight hours.

Incorrect positioning and cast shadows from trees or structures will impact the light output of the illume panel. For best results ensure you choose a north-facing and open position to install the solar collector.



IT'S A GOOD IDEA TO FAMILIARISE YOURSELF WITH THE WAY THAT THE ILLUME COMPONENTS CONNECT TOGETHER BEFORE ATTEMPTING TO INSTALL THE SYSTEM IN YOUR CEILING.

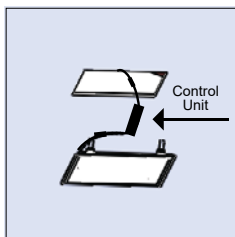
TRY CONNECTING THE COMPONENTS OUTDOORS BEFOREHAND, TO ENSURE THAT YOU ARE FAMILIAR WITH HOW THE COMPONENTS CONNECT. IF DONE IN DAYLIGHT THE ILLUME LIGHT PANEL SHOULD ILLUMINATE.



8

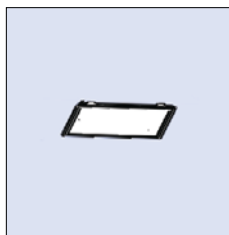
Connect control unit between solar panel cable and illume light panel.

Install one side of the light panel first on an angle by resting two springs on the plaster and depress each spring one at a time over plaster.



9

Finished installation should look as per diagram.



NOTE: If the external flexible cable or cord of this luminaire is damaged, it shall be exclusively replaced by the manufacturer or their service agent or a similar qualified person in order to avoid a hazard. The light source contained in this luminaire shall only be replaced by the manufacturer or their service agent or a similar qualified person.

INSULATION RATING IC

A type IC, recessed luminaire can be installed with building insulation material that can safely be exposed continuously to temperatures up to 90°C. Such insulation can cover and abut the side of the luminaire.

NOTE: If installed in accordance with the IC rating, insulation shall have a minimum temperature rating of 90°C.

Risk of FIRE - Required clearance from structural members and building elements
SCB = 0mm HCB = 0mm

SCB - Side Clearance to Building Element:

HCB - Height Clearance to Building element:

Minimum distance between the side of the recessed luminaire and any building element.

Minimum distance between the top of the recessed luminaire and any building element above it

